

B&C Milano /women - SW 520



MEDIUM FIT

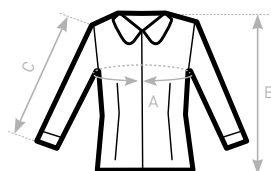
- 3/4 sleeved Poplin shirt
- Combed cotton/elastane stretch fabric
- Tone-on-tone buttons
- Feminine cut
- No pleat on back panel for optimal printing and embroidery
- 2 spare buttons
- 40°C washable



- 97% combed cotton - 3% elastane
- Poplin Stretch
- 135 g/m² **STRETCH**
- XS - S - M - L - XL - 2XL
- 1 pc/pack & 20 pcs/carton



**DUO♂
CONCEPT**
with B&C London



SIZES [CM]

B&C MILANO /WOMEN SW 520	XS	S	M	L	XL	2XL	3XL
A HALF CHEST	44,2	46,6	49	51,4	53,8	56,2	-
B BODY LENGTH	62,3	63,8	65,3	66,8	68,3	69,8	-
C SLEEVE LENGTH	47,5	48	48,5	49	49,5	50	-



OEKO-TEX®
CONFIDENCE IN TEXTILES
STANDARD 100
1501003 Certexbel
Tested for harmful substances.
www.oeko-tex.com/standard100