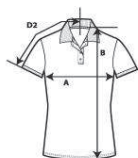


Activewear Europe 2018

**85800L****Premium Cotton Ladies' Double Pique Polo****DETAILS**

|                   |  |
|-------------------|--|
| <b>Weight</b>     | 223.0 G/SqM (White 214.0 G/SqM)  |
| <b>Content</b>    | 100% Combed Ring Spun Cotton   |
| <b>Features</b>   | Semi-fitted contoured silhouette with side seam and side vents<br>Contoured welt collar and cuffs<br>Pad printed neck label and double-satin joker label<br>Rolled forward topstitched shoulder<br>Clean finished reversed placket with reinforced bottom box<br>3 color-matched buttons<br>Twin needle bottom hem |
| <b>Sizes</b>      | S-2XL  |
| <b>Case Packs</b> | S - 2XL 36 PIECES  |
| <b>Colours</b>    | 16   |
| <b>SKU's</b>      | 80   |

**SPECIFICATIONS**

| Centimeters                             | Tol-  | Tol+  | S      | M      | L      | XL     | 2XL    |
|---|-------|-------|--------|--------|--------|--------|--------|
| <b>Chest (A)</b>                        | 2.540 | 2.540 | 43.000 | 46.000 | 50.000 | 54.000 | 58.000 |
| <b>Length from HPS (B)</b>              | 2.540 | 2.540 | 63.000 | 66.000 | 69.000 | 72.000 | 76.000 |
| <b>Sleeve length (Center back) (D2)</b> | 2.540 | 2.540 | 36.000 | 38.000 | 41.000 | 43.000 | 46.000 |
| Inches                                  | Tol-  | Tol+  | S      | M      | L      | XL     | 2XL    |
| <b>Chest (A)</b>                        | 1.000 | 1.000 | 17.000 | 18.000 | 19.750 | 21.250 | 23.000 |
| <b>Length from HPS (B)</b>              | 1.000 | 1.000 | 24.750 | 26.000 | 27.250 | 28.500 | 29.750 |
| <b>Sleeve length (Center back) (D2)</b> | 1.000 | 1.000 | 14.000 | 15.000 | 16.000 | 17.000 | 18.000 |

**S-2XL**

| COLOURS              | Code | Comments                  |
|----------------------|------|---------------------------|
| Black                | 036  |                           |
| Daisy                | 098  |                           |
| Dark Heather         | 108  | 50% Cotton, 50% Polyester |
| Heliconia            | 010  |                           |
| Irish Green          | 167  |                           |
| Kiwi                 | 186  |                           |
| Light Blue           | 069  |                           |
| Light Pink           | 020  |                           |
| Maroon               | 083  |                           |
| Navy                 | 032  |                           |
| Purple               | 081  |                           |
| Red                  | 040  |                           |
| Ring Spun Sport Grey | 295  | 90% Cotton, 10% Polyester |
| Royal                | 051  |                           |
| Sapphire             | 026  |                           |
| White                | 030  |                           |

**CHANGES**

Total Net Change 0 SKU's