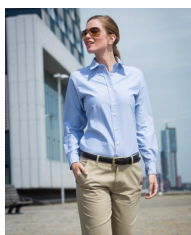


NEW 2017 LADIES' MANDARIN SHIRT WITH ROLL-TAB SLEEVE

NEW-2017-LADIES-MANDERIN-SHIRT-WITH-ROLL-TAB-SLEEVE



Matches with:



H511



H512C-MENS-MODERN-LONG-SLEEVED-OXFORD-SHIRT



H512R-MENS-MODERN-LONG-SLEEVED-OXFORD-SHIRT-REGULAR-FIT



MENS-H512S-MODERN-LONG-SLEEVED-OXFORD-SHIRT-SLIM-FIT

- Mandarin collar, roll-back sleeves with tab
- PUFY wicking yarn, Anti-bacterial
- Cut out brand label
- Regular fit, DTM buttons
- Adjustable cuff
- Anti-UV UVPF > 50
- Quick dry
- Easy care
- Excellent colour retention
- Perfectly compliments Men's H592
- 100% Polyester
- 115 gsm
- 8/XS-22/4XL

- 100% Polyester
- 115 gsm
- Wash at 40 degrees
- Wash Dark Colours Separately
- Wash and Dry Inside Out
- Dry Out of Direct Heat and Sunlight
- Do Not Tumble Dry
- Iron on Reverse on a low heat
- Do not bleach

To Fit Sizes	8/XS	10/S	12/M	14/L	16/XL	18/XXL
Chest inches	36"	38"	40"	42"	44"	46"
Chest cms	76-81	81-86	86-91	86	96-101	101-107

Garment Measurements	8/XS	10/S	12/M	14/L	16/XL	18/XXL
Chest cms	44	47	50	53	56	59
length cms	65	67	69	71	73	75
sleeve length cms	58	60	62	64	65.5	67

