

# KARIBAN

**REFERENCE :** K239

**SIZES :** S\_M\_L\_XL\_XXL\_3XL

**COMPOSITION :**

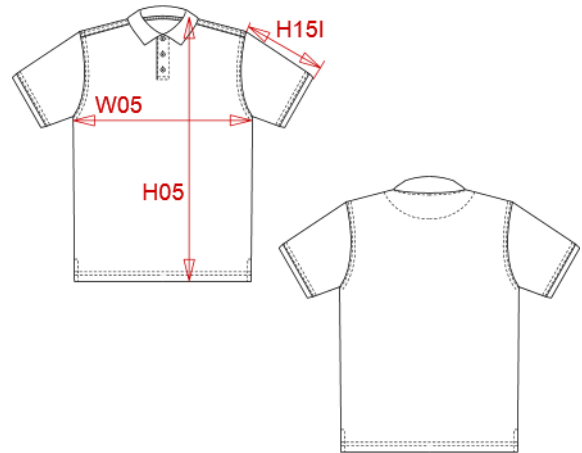
Main fabric : Combed Cotton / Elastane pique 95/5 - 220 95% cotton / 5%elastane

**WEIGHT :**

Main fabric : 220 gsm

**ARTICLE WEIGHT :**

271 gr/pc



DESCRIPTION
<b>Français :</b> Polo homme manches courtes
<b>English :</b> Short sleeve polo shirt
<b>Nederlands :</b> Heren polo met korte mouwen
<b>Deutsch :</b> Herren Kurzarm Polohemd
<b>Español :</b> Polo de manga corta
<b>Italiano :</b> Polo uomo maniche corte
<b>Português :</b> Polo de manga curta

COLORS	PANTONE SERIGRAPHIE
White	White
Black	Black
Navy	433C
Red	200C
Dark grey	447C

MEASUREMENT						
Description	S	M	L	XL	XXL	3XL
<b>H05 (M)</b> Hauteur totale / Total height	70	72	74	76	78	80
<b>W05 (M)</b> 1/2 largeur poitrine / 1/2 chest width	48	51	54	57	60	63
<b>H151 (M)</b> Longueur manche avec bord côte / Sleeve length with rib	22,75	23,50	24,25	25	25,75	26,50

CARE LABEL

PACKING	
Box	25 pcs / box S => L:60cm W:40cm H:16cm GW:7.60kg NW:6.10kg M => L:60cm W:40cm H:16cm GW:7.90kg NW:6.40kg L => L:60cm W:40cm H:16cm GW:8.50kg NW:7.00kg XL => L:60cm W:40cm H:16cm GW:8.80kg NW:7.30kg XXL => L:60cm W:40cm H:16cm GW:9.30kg NW:7.80kg 3XL => L:60cm W:40cm H:16cm GW:9.70kg NW:8.20kg