

KARIBAN

REFERENCE : K258

SIZES : S_M_L_XL_XXL_3XL_4XL

COMPOSITION :

Main fabric : Ring spun Combed Cotton pique preshrunk - 180
100%cotton

Main fabric : Ring spun Combed Cotton pique preshrunk - 180
For contrasted inner front tab 100%cotton

Main fabric : Ring spun Combed Cotton/Viscose pique
preshrunk 90/10 - 180 For heather colors

For contrasted inner front tab 90%cotton / 10%viscose

WEIGHT :

Main fabric : 180 gsm

Main fabric : 180 gsm

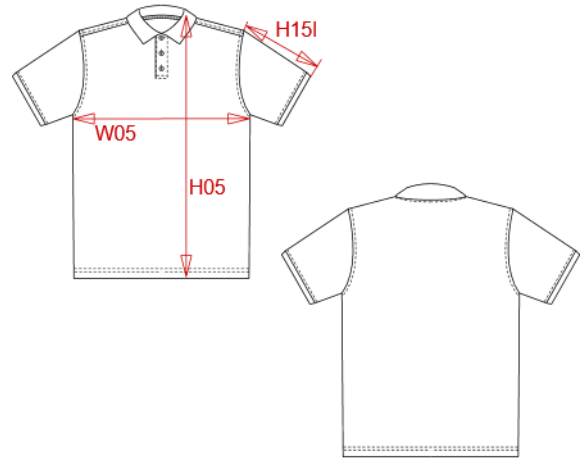
Main fabric : 180 gsm

TECHNICAL DETAIL :

Preshrunk

ARTICLE WEIGHT :

222 gr/pc



DESCRIPTION								COLORS		PANTONE SERIGRAPHIE	
Français : Polo piqué bicolore homme								Black / Oxford grey	Black / Based on Cool gray 7C		
English : Men's two-tone piqué polo shirt								Navy / Oxford grey	433C / Based on Cool gray 7C		
Nederlands : Piqué-herenpolo tweekleurig								White / Oxford grey	White / Based on Cool gray 7C		
Deutsch : Zweifarbiges Piqué-Polohemd für Herren								Light royal blue / Oxford grey	653C / Based on Cool gray 7C		
Español : Polo piqué bicolor de hombre								Red / Black	200C / Black		
Italiano : Polo piqué bicolore uomo											
Português : Polo de homem piqué bicolor											
MEASUREMENT											
Description	S	M	L	XL	XXL	3XL	4XL				
H05 (M) Hauteur totale / Total height	70	72	74	76	78	80	82				
W05 (M) 1/2 largeur poitrine / 1/2 chest width	50	53	56	59	62	65	68				
H151 (M) Longueur manche avec bord côte / Sleeve length with rib	22,75	23,50	24,25	25	25,75	26,50	27,25				
CARE LABEL											
PACKING											
Box	50 pcs / box S-M => L:60cm W:40cm H:26cm GW:12.10kg NW:10.10kg L-XL => L:60cm W:40cm H:28cm GW:12.50kg NW:11.50kg XXL => L:60cm W:40cm H:30cm GW:14.30kg NW:12.30kg 3XL-4XL => L:60cm W:40cm H:33cm GW:15.00kg NW:13.00kg L => L:60cm W:40cm H:cm GW:kg NW:kg XL => L:60cm W:40cm H:cm GW:kg NW:kg XXL => L:60cm W:40cm H:cm GW:kg NW:kg 3XL => L:60cm W:40cm H:cm GW:kg NW:kg 4XL => L:60cm W:40cm H:cm GW:kg NW:kg										