

KARIBAN

REFERENCE : K390

SIZES : XS_S_M_L_XL_XXL_3XL

COMPOSITION :

Main fabric : Carded cotton single jersey - 140 100%cotton

Main fabric : Carded cotton / viscose single jersey 90/10 - 140

For heather colors 90%cotton / 10%viscose

WEIGHT :

Main fabric : 140 gsm

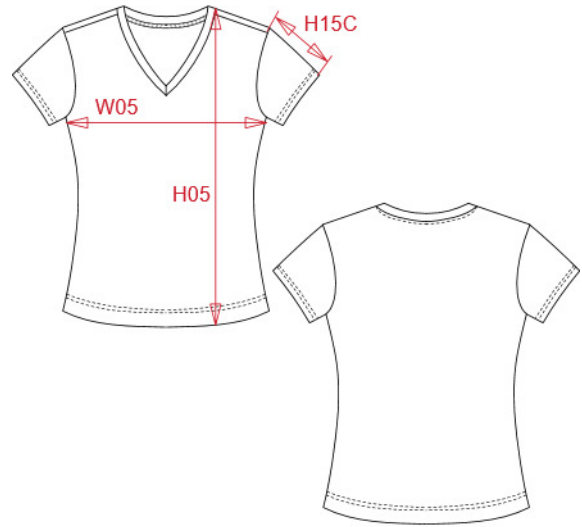
Main fabric : 140 gsm

TECHNICAL DETAIL :

Regular

ARTICLE WEIGHT :

100 gr/pc



DESCRIPTION								COLORS		PANTONE SERIGRAPHIE	
Français : T-Shirt col V manches courtes femme								White	White		
English : Ladies' vneck short sleeve t-shirt								Black	Black		
Nederlands : Dames-t-shirt V-hals korte mouwen								Navy	433C		
Deutsch : Damen T-Shirt mit V-Ausschnitt								Oxford grey	Based on Cool gray 7C		
Español : Camiseta con cuello de pico y de manga corta para mujer								Red	200C		
Italiano : T-shirt donna maniche corte scollo a V								Light royal blue	653C		
Português : T-shirt de senhora com decote em V de manga curta								Yellow	1235C		
MEASUREMENT								Orange	1585C		
Description	XS	S	M	L	XL	XXL	3XL	Forest green	5605C		
H05 (L) Hauteur totale / Total height	60	62	64	66	68	70	72	Dark grey	447C		
W05 (L) 1/2 largeur poitrine à 1.5cm de l'emmanchure / 1/2 chest width at 1.5cm below armhole	43	46	49	52	55	58	61	Tropical blue	7468C		
H15C (L) Longueur manche courte / Short sleeve length	14	14,75	15,50	16,25	17	17,75	18,50	Wine	504C		
CARE LABEL								Sky blue	278C		
								Fuchsia	7425C		
PACKING								Kelly green	7727C		
Box	50 pcs / box XS-3XL => L:60cm W:40cm H:16cm GW:6.60kg NW:5.00kg										