

KARIBAN

REFERENCE : K510

SIZES : XS_S_M_L_XL_XXL

COMPOSITION :

Main fabric : Cotton poplin - 125 100%cotton

WEIGHT :

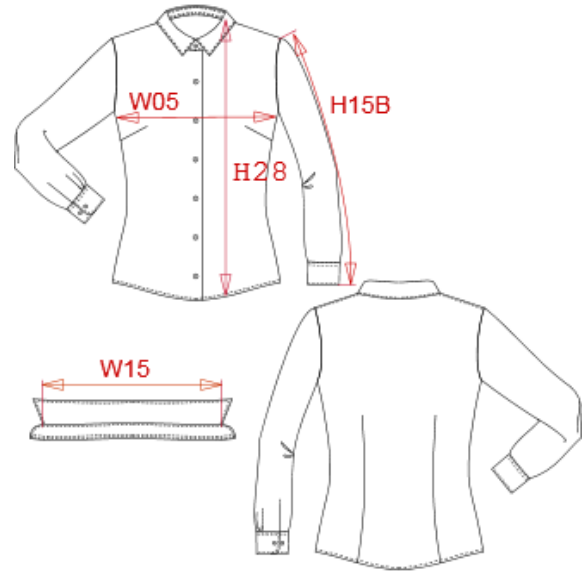
Main fabric : 125 gsm

TECHNICAL DETAIL :

Easy care finish

ARTICLE WEIGHT :

165 gr/pc



DESCRIPTION	COLORS	PANTONE SERIGRAFIE
Français : Chemise popeline manches longues femme	White	White
English : Ladies' long sleeve poplin shirt	Bright sky	2708C
Nederlands : Damesblouse in popeline met lange mouwen	Black	Black
Deutsch : Langärmelige Popeline-Bluse	Navy	433C
Español : Camisa de popelina con manga larga para mujer	Striped pale blue / White	277C / White
Italiano : Camicia donna popeline maniche lunghe		
Português : Camisa de senhora em popeline de manga comprida		

MEASUREMENT						
Description	XS	S	M	L	XL	XXL
W05 (M) 1/2 largeur poitrine à 1.5cm de l'emmanchure / 1/2 chest width at 1.5cm below armhole	44,50	47,50	50,50	53,50	56,50	59,50
H09 (L) Hauteur totale devant / Front total height	63	65	67	69	71	73
H15B (L) Longueur manche avec poignet / Sleeve length with cuff	60	61	62	63	64	65
W15 (M) Tour de haut de col / Top collar measurement	38	39,25	40,50	41,75	43	44,25

CARE LABEL				

PACKING	
Box	12 pcs / box XS => L:60cm W:40cm H:20cm GW:4.30kg NW:3.00kg S => L:60cm W:40cm H:20cm GW:4.95kg NW:3.10kg M => L:60cm W:40cm H:20cm GW:5.00kg NW:3.15kg L => L:60cm W:40cm H:20cm GW:5.20kg NW:3.35kg XL => L:60cm W:40cm H:20cm GW:5.35kg NW:3.50kg XXL => L:60cm W:40cm H:20cm GW:5.50kg NW:3.65kg