

# KARIBAN

**REFERENCE :** K572

**SIZES :** S M L XL XXL

**COMPOSITION :**

Main fabric : Cotton peach poplin 120 100%cotton

**WEIGHT :**

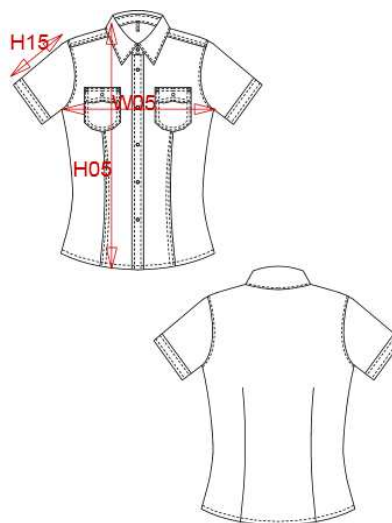
Main fabric : 120 gsm

**FABRIC CONSTRUCTION AND FINISHING :**

Garment washed

**ARTICLE WEIGHT :**

134 gr/pc



DESCRIPTION										COLORS		PANTONE SERIGRAPHIE	
<b>Français :</b> Chemise femme manches courtes cintrée										Black		Black	
<b>English :</b> Short sleeves fitted shirt										White		White	
<b>Nederlands :</b> Getailleerd dameshemd met korte mouwen										Navy		296C	
<b>Deutsch :</b> Tailliertedamen-kurzarmbluse										Beige		7528C	
<b>Español :</b> Camisas de manga corta para mujer										Khaki		5743C	
<b>Italiano :</b> Camicia donna maniche corte taglio sagomato													
<b>Português :</b> Camisa Tropical de senhora													
MEASUREMENT													
Description	Tol +/-	Tol +/- Taille max	S	M	L	XL	XXL						
<b>W05</b> 1/2 largeur poitrine / 1/2 chest width	2,0%	2,0%	49,50	51,50	53,50	56,50	59,50						
<b>H05</b> Hauteur totale / Total height			63,25	64,75	66,25	68,50	70,75						
<b>H15</b> Longueur manche / Sleeve length			19,50	20,50	21,50	22,75	24						
CARE LABEL													
PACKING													
Box	25 pcs / box												
	S-XXL => L:52cm W:36cm H:20cm GW:6.50kg NW:5.50kg												