

KARIBAN

REFERENCE : K613

SIZES : S_M_L_XL_XXL_3XL_4XL_5XL

COMPOSITION :

Main fabric : Polyamide twill - 166 100% polyamide

Padding : Polyester polyfil - 150 For quilted body and sleeve lining 100%polyester

Padding : Polyester polyfil - 50 For inside front placket, pocket flaps and pipings 100%polyester

Lining 2 : Polyester taffeta 210T - 60 Inside quilted lining 100% polyester

WEIGHT :

Main fabric : 166 gsm

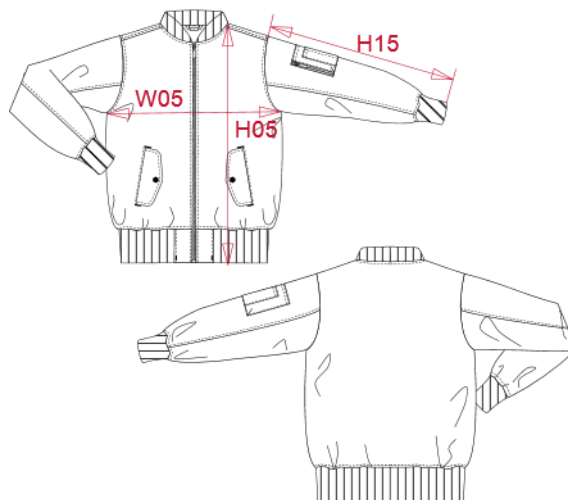
Padding : 150 gsm

Padding : 50 gsm

Lining 2 : 60 gsm

ARTICLE WEIGHT :

917 gr/pc



DESCRIPTION
Français : Blouson bomber réversible
English : Reversible bomber jacket
Nederlands : Omkeerbaar bomberjack
Deutsch : Wende-Bomberjacke
Español : Cazadora Bomber reversible
Italiano : Giacca Bomber double face
Português : Blusão bomber reversível

COLORS	PANTONE SERIGRAPHIE
Black / Orange	Black / 1585C

MEASUREMENT										
Description	S	M	L	XL	XXL	3XL	4XL	5XL		
H05 (M) Hauteur totale / Total height	69	71	73	75	77	79	81	83		
W05 (M) 1/2 largeur poitrine / 1/2 chest width	57	60	63	66	69	72	75	78		
H15B (M) Longueur manche avec poignet / Sleeve length with cuff	68	69,50	71	72,50	74	75,50	77	78,50		

CARE LABEL

PACKING	
Box	10 pcs / box S => L:60cm W:40cm H:42cm GW:10.6kg NW:8.7:kg M => L:60cm W:40cm H:42cm GW:11.1kg NW:9.2kg L => L:60cm W:40cm H:42cm GW:11.5kg NW9.6:kg XL => L:60cm W:40cm H:42cm GW:12.1kg NW:10.2kg XXL => L:60cm W:40cm H:42cm GW:12.4kg NW:10.5kg 3XL => L:60cm W:40cm H:42cm GW:12.8 kg NW:10.9kg 4XL => L:60cm W:40cm H:42cm GW:13.6kg NW:11.7kg 5XL => L:60cm W:40cm H:42cm GW:14kg NW:12.1kg