

KARIBAN

REFERENCE : KV2315

SIZES : XS_S_M_L_XL_XXL_3XL

COMPOSITION :

Main fabric : Washed French Terry Cotton fleece - 300 For main fabric, hood lining and necktape 100%cotton

WEIGHT :

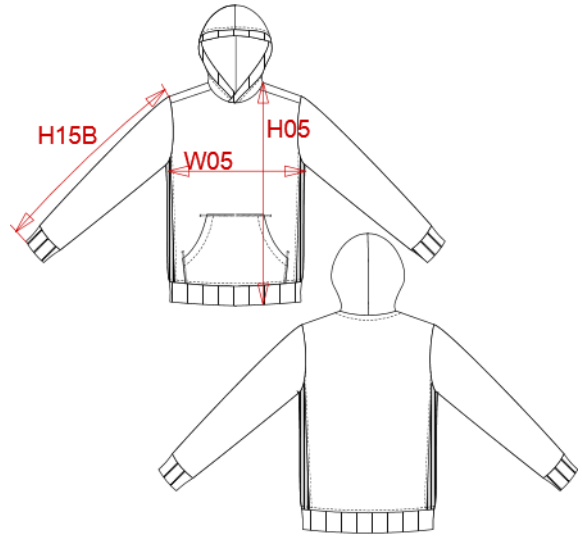
Main fabric : 300 gsm

TECHNICAL DETAIL :

Peach

ARTICLE WEIGHT :

625 gr/pc



DESCRIPTION								COLORS		PANTONE SERIGRAPHIE	
Français : Sweat-shirt à capuche french terry English : French terry hooded sweatshirt Nederlands : Sweater met capuchon van french terry Deutsch : Kapuzensweatshirt aus French Terry Español : Sudadera con capucha french terry Italiano : Felpa French Terry con cappuccio Português : Sweatshirt french terry com capuz								Vintage navy		533C	
								Vintage charcoal		447C	
								Vintage denim		7545C	
								Vintage marsala		7616C	
MEASUREMENT											
Description	XS	S	M	L	XL	XXL	3XL				
H05 (M) Hauteur totale / Total height	69	71	73	75	77	79	81				
W05 (M) 1/2 largeur poitrine à 1.5cm de l'emmanchure / 1/2 chest width at 1.5cm below armhole	49	52	55	58	61	64	67				
H15B (M) Longueur manche avec poignet / Sleeve length with cuff	66	67	68	69	70	71	72				
CARE LABEL											
PACKING											
Box	16 pcs / box XS => L:60cm W:38cm H:26cm GW:9.9kg NW:8.6kg S => L:60cm W:38cm H:26cm GW:10.4kg NW:9.10kg M => L:60cm W:38cm H:26cm GW:11.2kg NW:9.9kg L => L:60cm W:38cm H:28cm GW:11.5kg NW:10.2kg XL => L:60cm W:38cm H:28cm GW:12.3kg NW:11.0kg XXL => L:60cm W:38cm H:30cm GW:12.6kg NW:11.3kg 3XL => L:60cm W:38cm H:30cm GW:12.9kg NW:11.6kg										