

B&C Women-Only Tattoo - TW 014

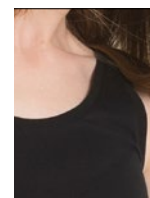


MEDIUM FIT

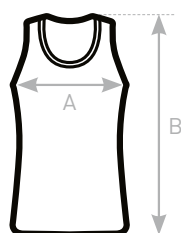
- Tank Top
- Wide crew neck collar in 1x1 rib in self fabric
- Armholes in 1x1 rib in self fabric
- Bottom hem with double topstitching
- Side seams



- 100% pre-shrunk ring-spun cotton
- Single Jersey
- 145 g/m²
- XS - S - M - L - XL
- 5 pcs/pack & 25 pcs/carton



**DUO♂
CONCEPT**
with B&C Athletic Move



SIZES [CM]

B&C WOMEN-ONLY TATTOO TW 014	XS	S	M	L	XL	XXL	XXXL
A HALF CHEST	35,5	38	40,5	44	47,5	-	-
B BODY LENGTH	56	57,5	59	60,5	62	-	-

