

# KARIBAN

**REFERENCE :** K252

**SIZES :** XS\_S\_M\_L\_XL\_XXL

**COMPOSITION :**

Main fabric : Combed cotton single Lacoste pique - 220 100% cotton

Main fabric : Cotton twill 210 For half moon and front placket 100%cotton

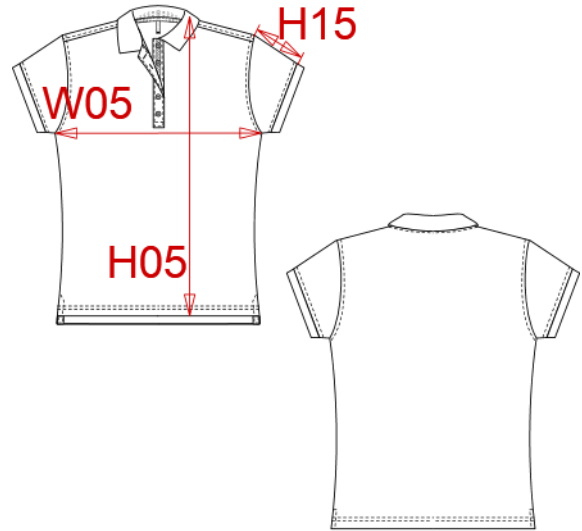
**WEIGHT :**

Main fabric : 220 gsm

Main fabric : 210 gsm

**ARTICLE WEIGHT :**

185 gr/pc



DESCRIPTION								COLORS		PANTONE SERIGRAPHIE	
<b>Français :</b> Polo manches courtes femme								Red / White / Navy		200C / White / 433C	
<b>English :</b> Ladies' short sleeve polo shirt								Navy / White / Red		296C / White / 200C	
<b>Nederlands :</b> Dames polo korte mouwen								White / Navy / White		White / 433C / White	
<b>Deutsch :</b> DAMEN KURZARM POLO											
<b>Español :</b> Polo de manga corta para mujer											
<b>Italiano :</b> POLO DONNA MANICHE CORTE											
<b>Português :</b> Polo de senhora manga curta											
MEASUREMENT											
Description	XS	S	M	L	XL	XXL					
<b>H09 (L)</b> Hauteur totale devant / Front total height	60	62	64	66	68	70					
<b>W05 (L)</b> 1/2 largeur poitrine à 1.5cm de l'emmanchure / 1/2 chest width at 1.5cm below armhole	42	45	48	51	54	57					
<b>H15 (L)</b> Longueur manche avec bord côte / Sleeve length with rib	12,75	13,25	13,75	14,25	14,75	15,25					
CARE LABEL											
PACKING											
Box	25 pcs / box XS-S => L:45cm W:35cm H:18cm GW:7.20kg NW:6.00kg M-L => L:48cm W:37cm H:18cm GW:8.00kg NW:7.00kg XL-XXL => L:52cm W:37cm H:18cm GW:9.00kg NW:7.60kg										