

# KARIBAN

**REFERENCE :** K504

**SIZES :** S\_M\_L\_XL\_XXL

**COMPOSITION :**

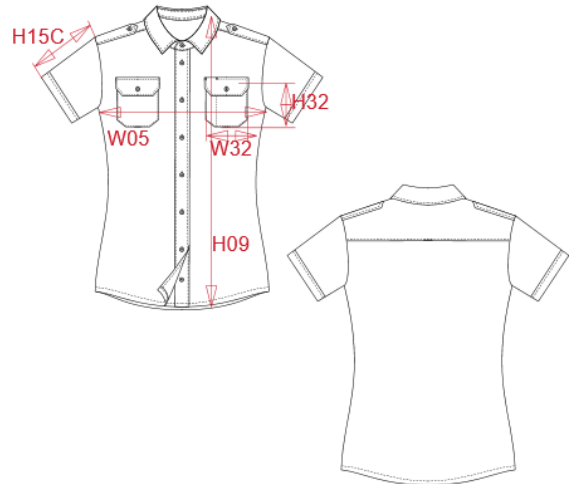
Main fabric : Polyester / Cotton poplin 65/35 - 115 65% polyester / 35%cotton

**WEIGHT :**

Main fabric : 115 gsm

**ARTICLE WEIGHT :**

136 gr/pc



DESCRIPTION							COLORS		PANTONE SERIGRAPHIE		
<b>Français :</b> Chemise pilote manches courtes femme							White	White			
<b>English :</b> Ladies' short sleeve pilot shirt							Sky blue	278C			
<b>Nederlands :</b> Damespilootoverhemd korte mouwen											
<b>Deutsch :</b> Kurzarm-Pilotenhemd für Damen											
<b>Español :</b> Camisa piloto de manga corta de mujer											
<b>Italiano :</b> Camicia pilota donna maniche corte											
<b>Português :</b> Camisa piloto de senhora de manga curta											
MEASUREMENT											
Description	S	M	L	XL	XXL						
<b>W05 (M)</b> 1/2 largeur poitrine à 1.5cm de l'emmanchure / 1/2 chest width at 1.5cm below armhole	47,50	50,50	53,50	56,50	59,50						
<b>H09 (L)</b> Hauteur totale devant / Front total height	65	67	69	71	73						
<b>H15C (L)</b> Longueur manche courte / Short sleeve length	17,30	18	18,70	19,40	20,10						
CARE LABEL											
PACKING											
Box	12 pcs / box S => L:54cm W:38cm H:20cm GW:3.48kg NW:2.38kg M => L:54cm W:38cm H:20cm GW:3.58kg NW:2.48kg L => L:54cm W:38cm H:20cm GW:3.71kg NW:2.61kg XL => L:54cm W:38cm H:20cm GW:3.82kg NW:2.72kg XXL => L:54cm W:38cm H:20cm GW:3.94kg NW:2.84kg										